



Events

GOLF CENTRAL BNE 2024

Welcome

With picturesque views overlooking our beautifully manicured lawns and gardens, we've got the perfect space for your next event. Whether it's team building or celebrating a special event we can help you plan a memorable experience for groups of 10 to 150 guests.

Our experienced events team will work with you to deliver the perfect event. With delicious food, unique game play and friendly service, Golf Central BNE is the ideal event location.

Giri Raj Paudel

Head Chef

Lynsey Burke

Events Manager

Blanche Reddick

Marketing Manager



Greenside Marquee

A SPACE YOU'LL NEVER FORGET

Outdoor cocktail space with picturesque views of our vibrant mini golf course

High ceilings

Garden and lawn views

Ability to add portable bar

Feature photo wall

Layout of your choice

Spacious open plan marquee

CAPACITY

Minimum 20

Maximum Seated: 50

Maximum Cocktail: 80

GREENSIDE & FAIRWAY

Minimum 100

Maximum Seated: 200

Maximum Cocktail: 250

Hire fees apply



Lawn Marquee

AN INTIMATE SPACE TO CELEBRATE

Open air marquee
Decorative fairy-lights
Flexible seating plan
Ideal for intimate events
Overlooking lush golf landscapes and the driving range

CAPACITY

Minimum 10

Maximum Seated: 30

Maximum Cocktail: 40

Hire fees apply



Tee Space

A GLORIOUS GOLFING ESCAPE

Open air space
Room for activities on lawn (lawn games available on request)
Central to lush golfing landscape
Flexible space layout

CAPACITY

Minimum 10

Maximum Seated: 30

Maximum Cocktail: 40



Clubhouse

DINE, PLAY AND CELEBRATE THE DAY

Flexible open style
Bar access
Built in audio visual (In house music)
Open plan space that flows outdoors onto the lush golfing landscape
High ceilings
Guest lounge area

CAPACITY

Minimum 10

Maximum Seated: 30

Maximum Cocktail: 40



Driving Range

UNIQUE AND FUN SPACE FOR ALL TO ENJOY

Private bays accommodating all group sizes
Access to World-class Top Tracer technology
Unique and fun experience
Delicious chef driven menu served straight to your bay
Ability to add private bar (minimum numbers apply)
Unlimited balls included
Complimentary access to club hire
Nine fun, interactive & challenging virtual games to try

CAPACITY

Maximum Seated: 70
Maximum Cocktail: 80

From \$90 per hour



Locker Room

TEE UP THE PERFECT MEETING

Prime location overlooking the top tracer driving range
Fully air conditioned
Equipped with wifi and built-in audio visual
Private hitting bays
Intimate event space

CAPACITY

Minimum 2

Maximum Seated: 8

Hire fees apply



Event Menu

GLUTEN FREE, VEGETARIAN & VEGAN OPTIONS AVAILABLE UPON REQUEST. ADDITIONAL CHARGES MAY APPLY.

THE SLICE

MINIMUM 12 GUESTS
MAXIMUM 80 GUESTS
\$25^{PP}

- Selection of our stone baked traditional and gourmet pizzas
- Garlic bread

OPTIONAL ADD ON:
Gourmet salad & french fries \$5^{PP}

THE WINTER BANQUET TABLE

MINIMUM 20 GUESTS
MAXIMUM 80 GUESTS
\$49^{PP}

- Chefs selection of dips and bread
- Charcuterie
- Fried polenta and mushroom sauce
- Portuguese style chicken
- Slow braised lamb ragu pasta
- Whole roasted beef rump
- Broccoloni
- Artisan bread roll
- Cesar salad
- Warm cauliflower salad
- Selection of condiments

THE BUNKER

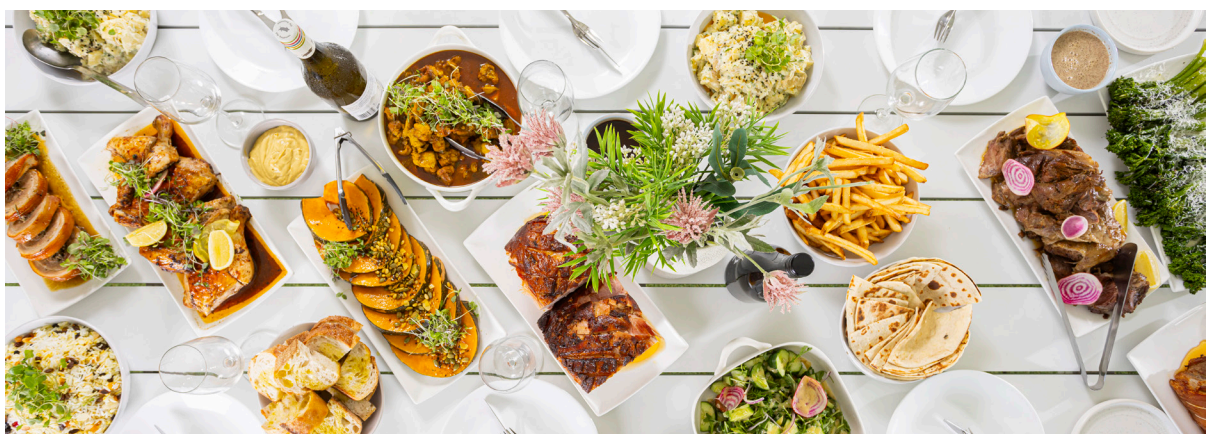
MINIMUM 12 GUESTS
MAXIMUM 80 GUESTS
\$30^{PP}

Create your ultimate burger masterpiece with this build your own burger station. Includes:

- Beef & chicken patties (vegan patties on request)
- Brioche & whole wheat buns (GF on request)
- Selection of cheese
- Salads - lettuce, tomato, onion, pickles, jalapenos, mushrooms, avocado, bacon, fried egg, coleslaw
- Selection of sauces - ketchup, mustard, mayonnaise, BBQ, ranch dressing, buffalo, sriracha mayonnaise, aioli
- Sides - french fries, sweet potato fries, side salad, coleslaw

OPTIONAL ADD ONS:

Onion Rings \$3^{PP}
Guacamole \$1^{PP}
Mac and Cheese \$4^{PP}
Extra Patty \$4^{PP}



Meetings Menu

MORNING REFRESHMENT

MINIMUM 8 GUESTS
MAXIMUM 30 GUESTS
\$12.5^{PP}

Oven fresh muffins and Danish pastries with toasted banana bread and sliced in-season fruit.

AFTERNOON REFRESHMENT

MINIMUM 8 GUESTS
MAXIMUM 30 GUESTS
\$12.5^{PP}

Decedent choc fudge brownies, citrusy carrot cake slices and the perfect Anzac bikkies with sliced in-season fruit.

PREMIUM LUNCH BREAK

MINIMUM 8 GUESTS
MAXIMUM 80 GUESTS
\$24^{PP}

Includes selection of sandwiches, wraps and rolls plus a selection of classic hot options including BLT, beef sliders, soft fish tacos & open tuna melts.

THE CLUBHOUSE

Take advantage of our fresh offerings from the clubhouse menu and pre-order from our current mouth-watering menu. Perfect for those small team meetings.

Share Menu

LIGHT SHARE OPTIONS, A PERFECT ADD ON FOR YOUR EVENT. GLUTEN FREE, VEGETARIAN & VEGAN OPTIONS AVAILABLE UPON REQUEST. ADDITIONAL CHARGES MAY APPLY.

ANTIPASTO PLATTER

SUITABLE FOR UP TO 15 GUESTS
\$120

Served as a grazing station this includes a selection of: prosciutto, pastrami, salami, cheeses, artichoke, peppers, olives, dry tomato, zucchini, sourdough and crackers (GFA).

SLIDERS PLATTER

INCLUDES 16 SLIDERS
\$120 PER PLATTER

A selection of our most popular sliders including: Pork slaw, Lamb Tzatziki, Chicken Chipotle and Haloumi.

PIZZA PLATTER

SUITABLE FOR UP TO 20 GUESTS
\$100 PER PLATTER

A selection of 5 stone baked with gourmet toppings.

TASTE OF ASIA PLATTER

SUITABLE FOR UP TO 15 GUESTS
\$110 PER PLATTER

A selection of chef made springrolls, dumplings and samosas.

VEGETARIAN DELIGHT PLATTER

SUITABLE FOR UP TO 15 GUESTS
\$80 PER PLATTER

Arancini with parmesan aioli, fried cauliflower, chickpea and parsley falafel with hummus, spring rolls.

CHURROS & CHOCOLATE PLATTER

SUITABLE FOR 10-16 GUESTS
\$75 PER PLATTER

Spanish churros dusted in cinnamon sugar. Pots of thick hot melted chocolate

DESSERT PLATTER

SUITABLE FOR 10-15 GUESTS
\$75 PER PLATTER

A selection of chef made treats including mouth watering mini tarts, cakes, slices, garnished with fresh berries.

SOURDOUGH & DIPS PLATTER

SUITABLE FOR UP TO 15 GUESTS
\$90 PER PLATTER

Crisp sourdough with a serving of 3 dips.

CHEESE BOARD

SUITABLE FOR UP TO 15 GUESTS
\$90 PER PLATTER

Australian soft and hard cheeses served with crackers and condiments.

HOT SEAFOOD PLATTER

SUITABLE FOR UP TO 15 GUESTS
\$150 PER PLATTER

Includes a selection of crumbed prawns, fried calamari, fish gojons, house sauce and condiments.

WINGS PLATTER

SUITABLE FOR UP TO 15 GUESTS
\$75 PER PLATTER

Smoked rubbed chicken wings, 3 sauces: BBQ bourban, hot sauce, ranch served with celery and carrot

FRESH FRUIT PLATTER

SUITABLE FOR UP TO 20 GUESTS
\$90 PER PLATTER

A selection of the freshest fruits sliced and presented by our chefs.

WARM MINI DONUT PLATTER

INCLUDES 45 DONUTS
\$75 PER PLATTER

Warm mini stuffed donuts served with cream caramel and berries.

Beverage Packages

AVAILABLE WITH THE PURCHASE OF A FOOD PACKAGE. ASK US ABOUT OUR BUCKS PARTY PACKAGES.

THE BIRDIE HOUSE PACKAGE

MINIMUM 10 GUESTS
2HR PACKAGE: \$35^{PP}
3HR PACKAGE: \$40^{PP}
4HR PACKAGE: \$45^{PP}

Inclusions:
Hahn Light
XXXX Gold
Hahn Super Dry
House Red
House White
House Moscato
Somersby Pear Cider

Soft drinks
Sparkling water
Juice

THE ALBATROSS PLATINUM UPGRADE

MINIMUM 10 GUESTS
2HR PACKAGE: \$47^{PP}
3HR PACKAGE: \$56^{PP}
4HR PACKAGE: \$63^{PP}

Inclusions:
Corona
Green Beacon Wayfarer
Balter
Ciders
Ginger beer
Premium wines
Soft drink
Sparkling water
Juice

THE WATERING HOLE SOFT DRINK PACKAGE

MINIMUM 10 GUESTS
2HR PACKAGE: \$15^{PP} ADULT / \$10^{PP} CHILD
3HR PACKAGE: \$20^{PP} ADULT / \$15^{PP} CHILD

Inclusions:
Soft drink
Juice
Water (inc. sparkling)



Add-Ons

PRIVATE BAR

MINIMUM 30 GUESTS*
\$200

Choice of:

- Up to 5 Beers & Ciders from the fridge range
- Up to 4 Wines (White, Red & Sparkling)
- Available for bar tabs & beverage packages only
- Private bartender
- *Subject to availability

DRIVING RANGE

FROM \$90 PER HOUR

- Reserved bay with Toptracer access
- Club hire
- Unlimited range balls

MINI GOLF

SUITABLE FOR 10+ GUESTS*
ADULTS \$14^{PP} KIDS \$10^{PP}

- 1 round of mini golf
- Equipment provided
- *Available when booked with event catering

PGA COACH

SUITABLE FOR 10+ GUESTS*
FROM \$140 PER COACH

- 1 hour of coaching
- Improve your golfing skills with one of our PGA Professional Coaches
- Ratio of up to 20 guests per 1 coach
- *Subject to availability



GOLF CENTRAL

40 The Circuit, Skygate Qld 4008

P: 07 3087 7800

E: events@golfcentralbne.com.au

www.golfcentralbne.com.au



@golfcentralbne